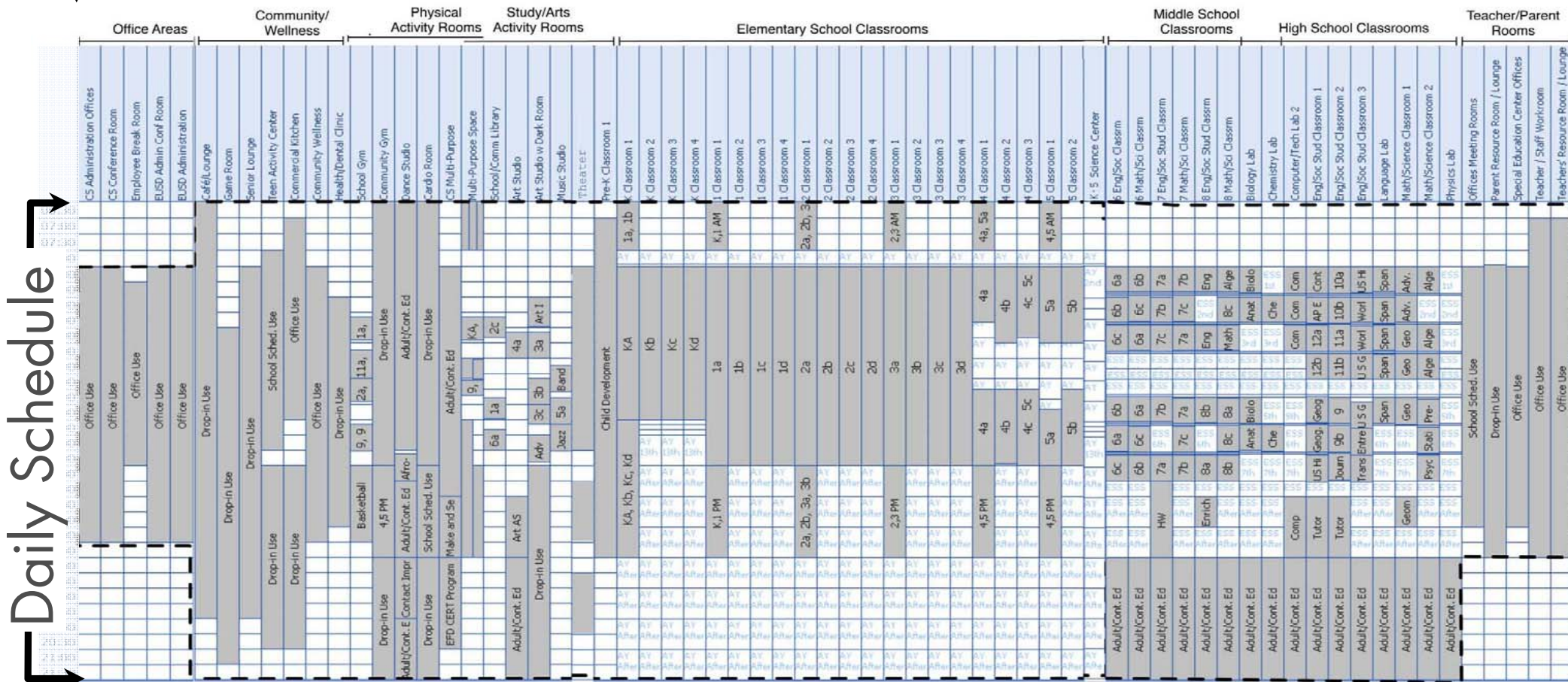


Utilization Schedule Modeling Discussion

- Room Clusters Defined
- Weekday Use: School in Session
- Weekday Use: School Not in Session
- Weekend Use
- Discussion

Utilization: Schedule Modeling Rooms



July 2011 ~ 150,000 SF
57% Utilization



nexus partners

AUGUST 2011

Room Clusters

Office Areas	CS Administration Offices
	CS Conference Room
	Employee Break Room
	BUSD Admin Conf Room
	BUSD Administration
Community/Wellness	Cafe/Lounge
	Gains Room
	Senior Lounge
	Teen Activity Center
	Commercial Kitchen
Physical Activity	Community Wellness
	Health/Dental Clinic
	School Gym
	Community Gym
	Dance Studio
Study/Arts Activity	Cardio Room
	CS Multi-Purpose
	Multi-Purpose Space
	School Comm Library
	Art Studio
K-8 Classrooms	Art Studio w Dark Room
	Music Studio
	Theater
	Pre-K Classroom 1
	K Classroom 1
High School Classrooms	K Classroom 2
	K Classroom 3
	K Classroom 4
	1 Classroom 1
	1 Classroom 2
Teacher/Parent	1 Classroom 3
	1 Classroom 4
	2 Classroom 1
	2 Classroom 2
	2 Classroom 3
High School Classrooms	2 Classroom 4
	3 Classroom 1
	3 Classroom 2
	3 Classroom 3
	3 Classroom 4
Teacher/Parent	4 Classroom 1
	4 Classroom 2
	4 Classroom 3
	5 Classroom 1
	5 Classroom 2
High School Classrooms	K-5 Science Center
	6 Eng/Soc Classrm
	6 Math/Sci Classrm
	7 Eng/Soc Stud Classrm
	7 Math/Sci Classrm
Teacher/Parent	8 Eng/Soc Stud Classrm
	8 Math/Sci Classrm
	Biology Lab
	Chemistry Lab
	Computer/Tech Lab 2
High School Classrooms	Eng/Soc Stud Classroom 1
	Eng/Soc Stud Classroom 2
	Eng/Soc Stud Classroom 3
	Language Lab
	Math/Science Classroom 1
Teacher/Parent	Math/Science Classroom 2
	Physics Lab
	Offices Meeting Rooms
	Parent Resource Room / Lounge
	Special Education Center Offices
Teacher/Parent	Teacher / Staff Workroom
	Teachers' Resource Room / Lounge

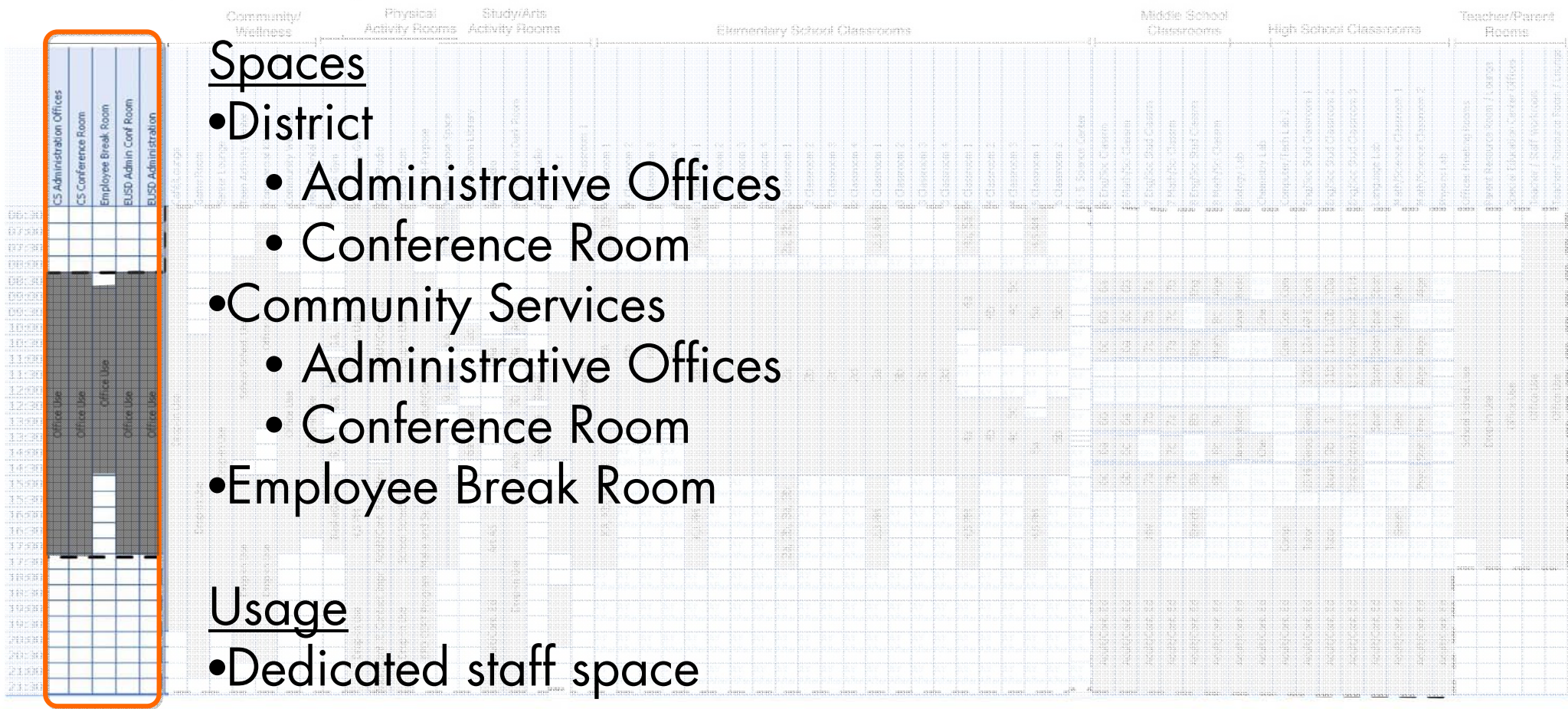
Office Area Cluster

Spaces

- District
 - Administrative Offices
 - Conference Room
- Community Services
 - Administrative Offices
 - Conference Room
- Employee Break Room

Usage

- Dedicated staff space



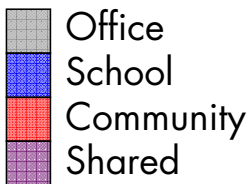
Community/Wellness Cluster

Spaces

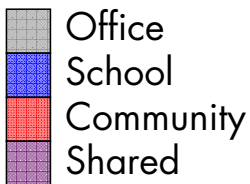
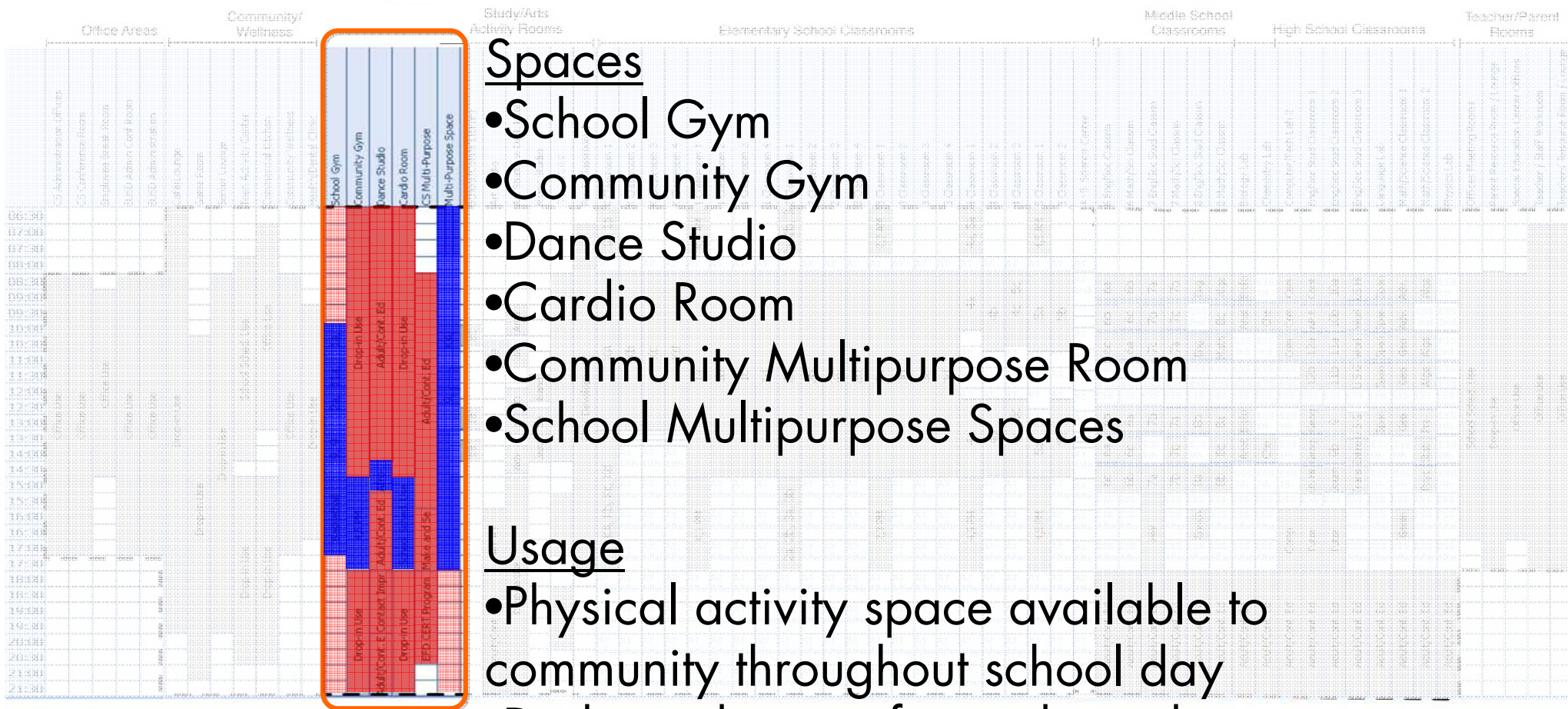
- Café/Lounge
- Game Room
- Senior Lounge
- Teen Activity Center
- Commercial Kitchen
- Community Wellness Center
- Health/Dental Clinic

Usage

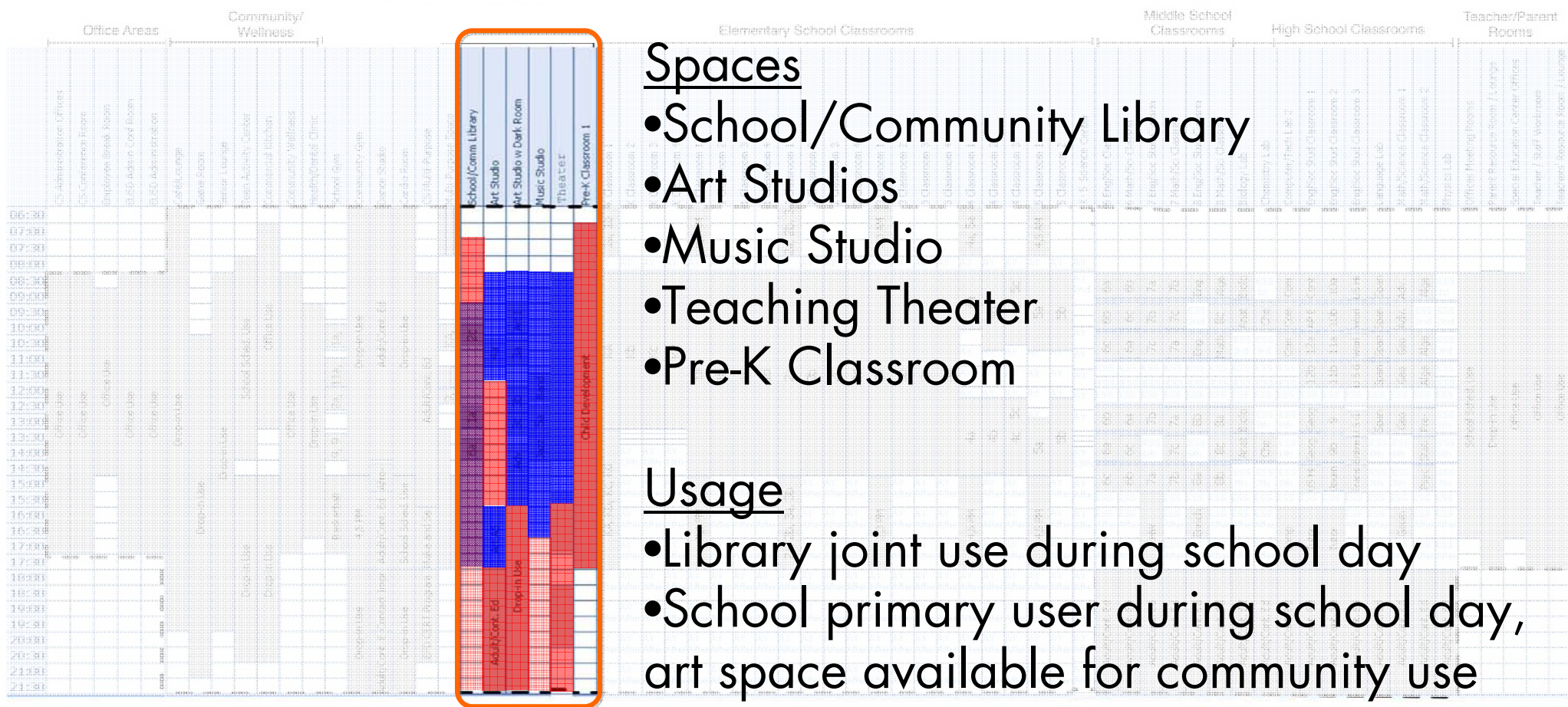
- Serves broad range of constituents
- Specific usages and functions vary by time of day, program offerings



Physical Activity Cluster



Study/Arts Activity Cluster



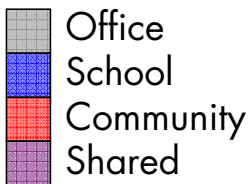
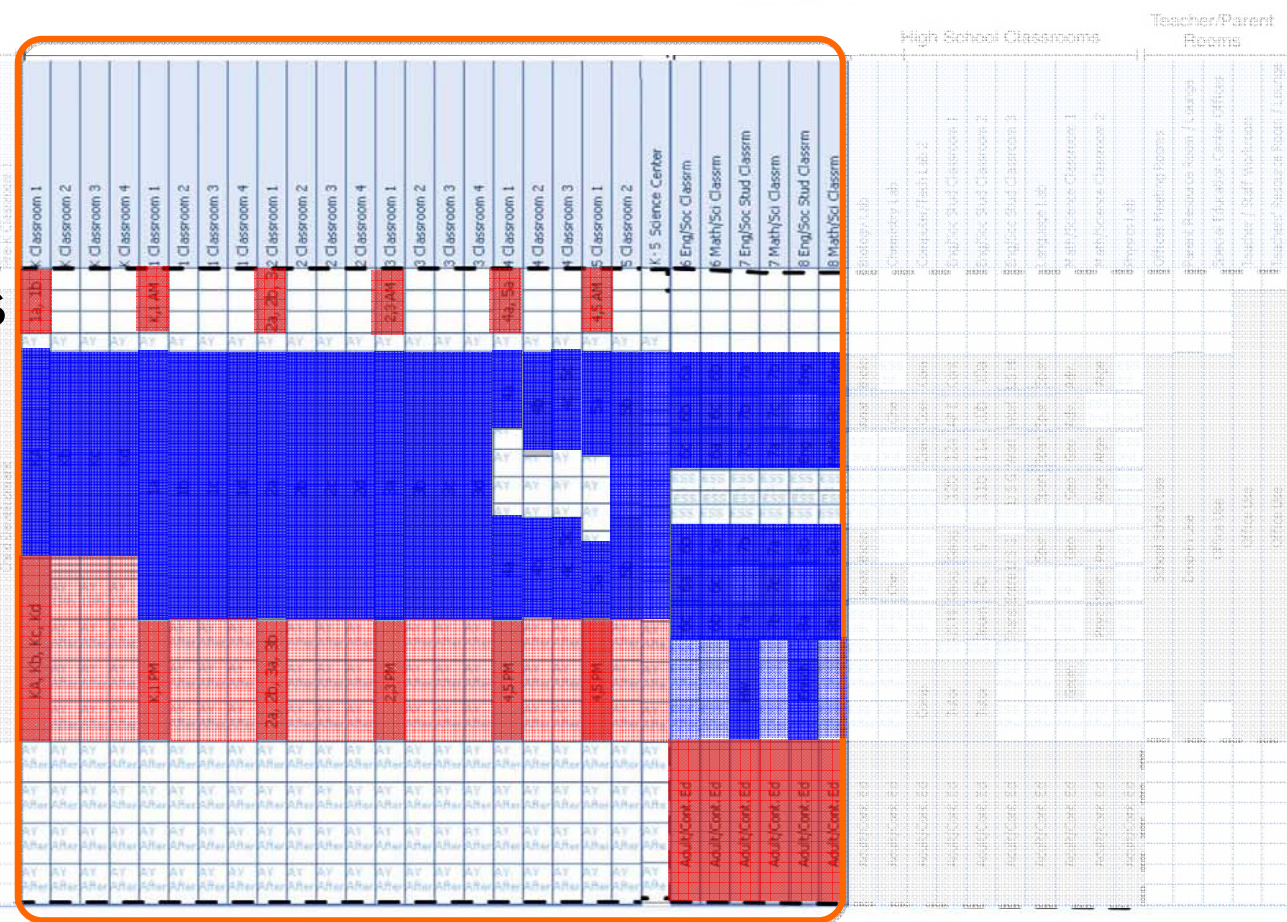
K-8 Classroom Cluster

Spaces

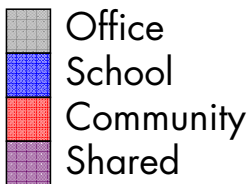
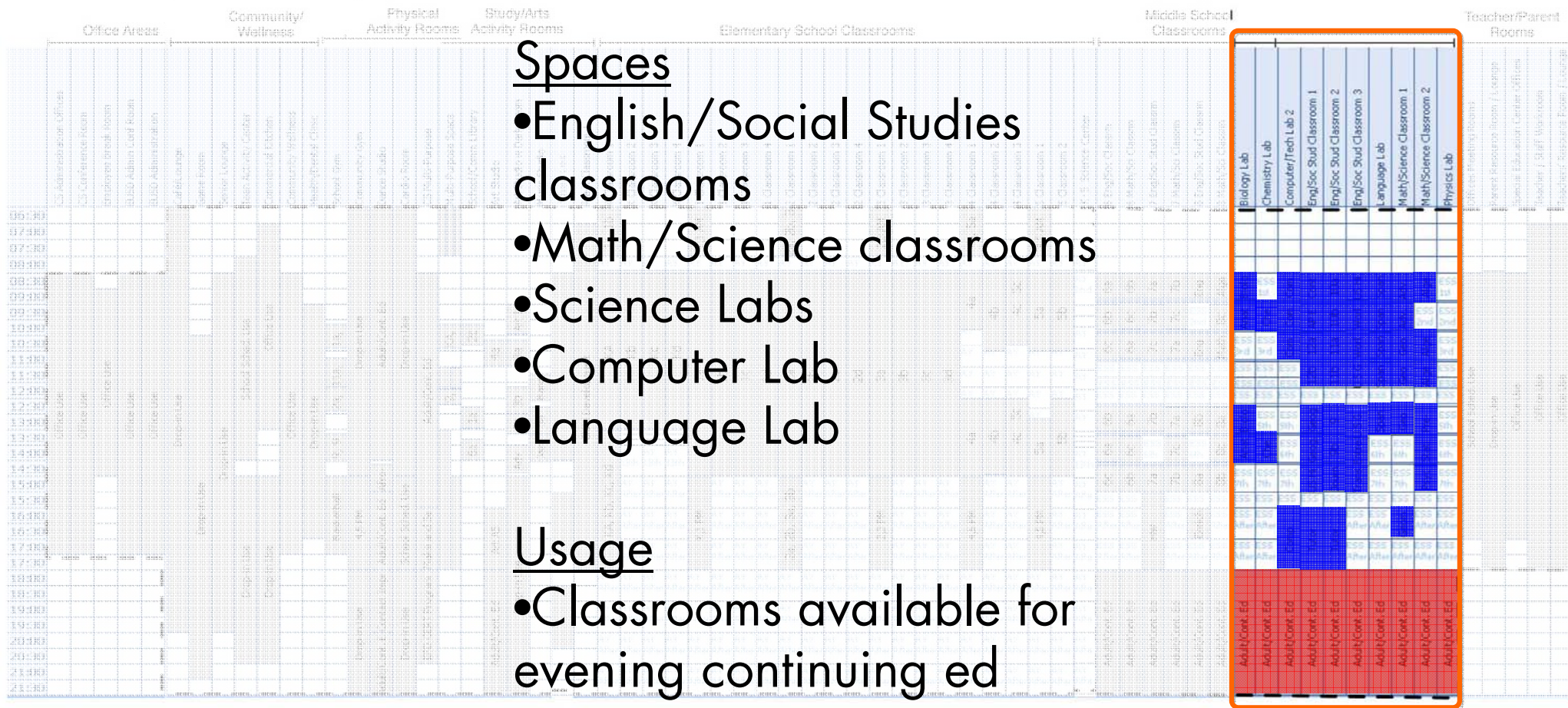
- K-5 dedicated classrooms
- K-5 Discovery Center
- 6-8 English/Social Studies classrooms
- 6-8 Math/Science classrooms

Usage

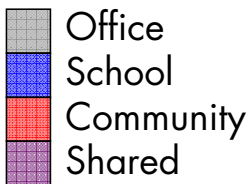
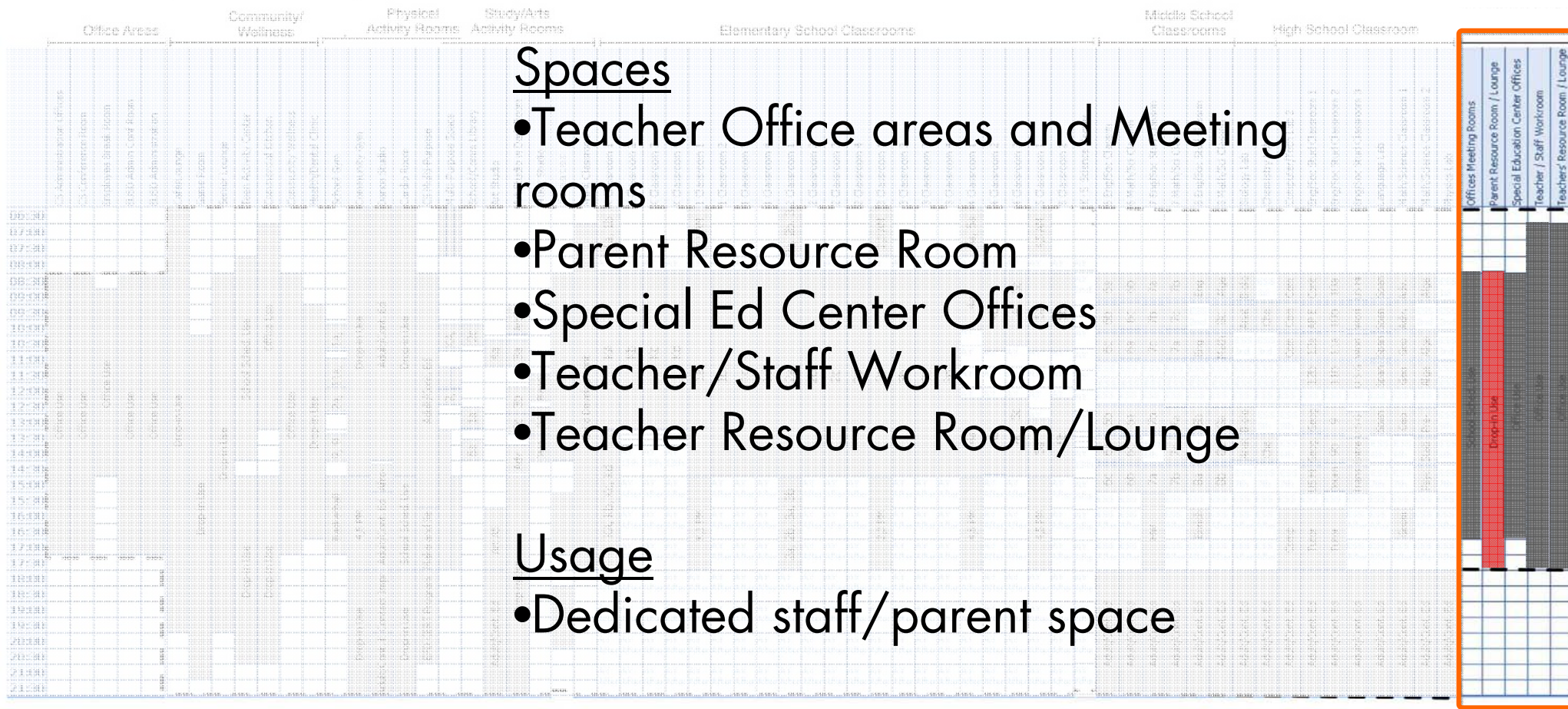
- K-5 before/after school programs
- 6-8 available for evening continuing ed



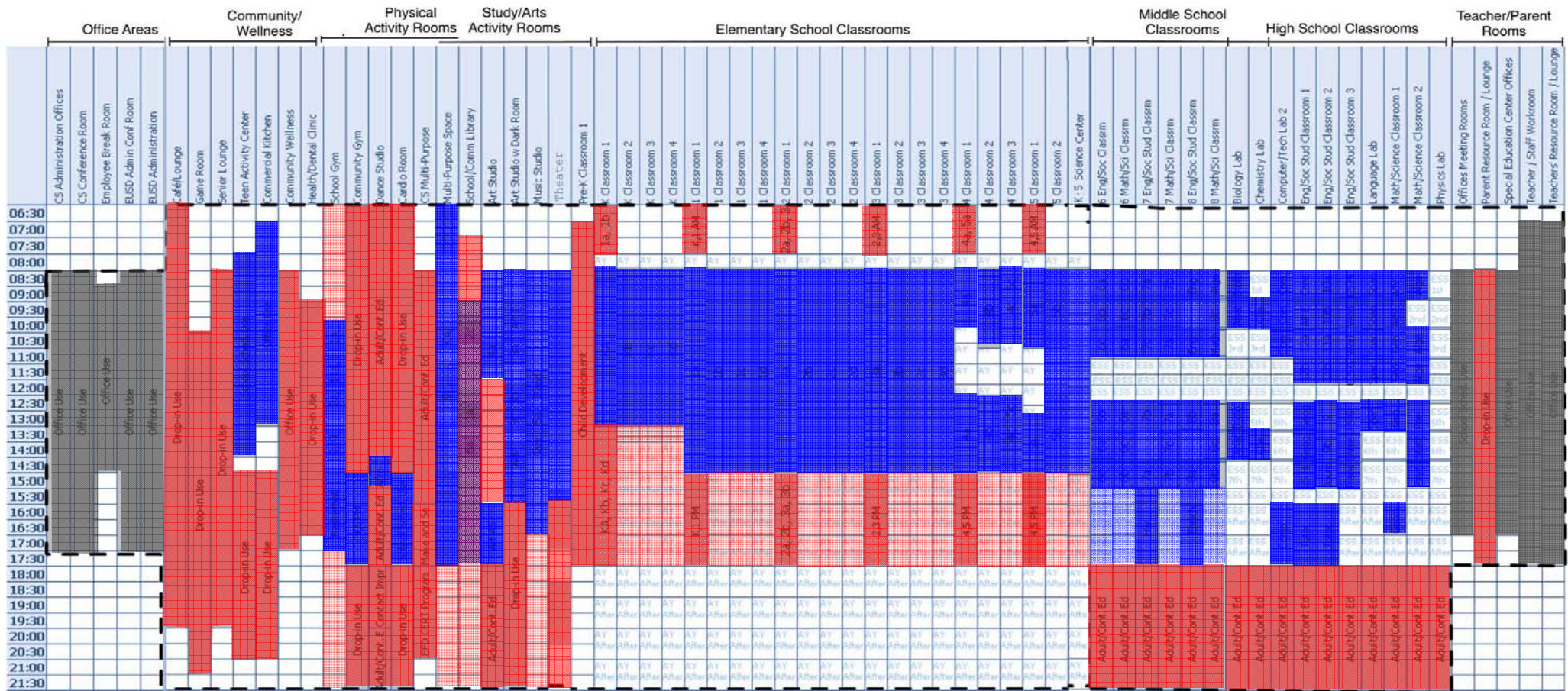
High School Classroom Cluster



Teacher/Parent Room Cluster

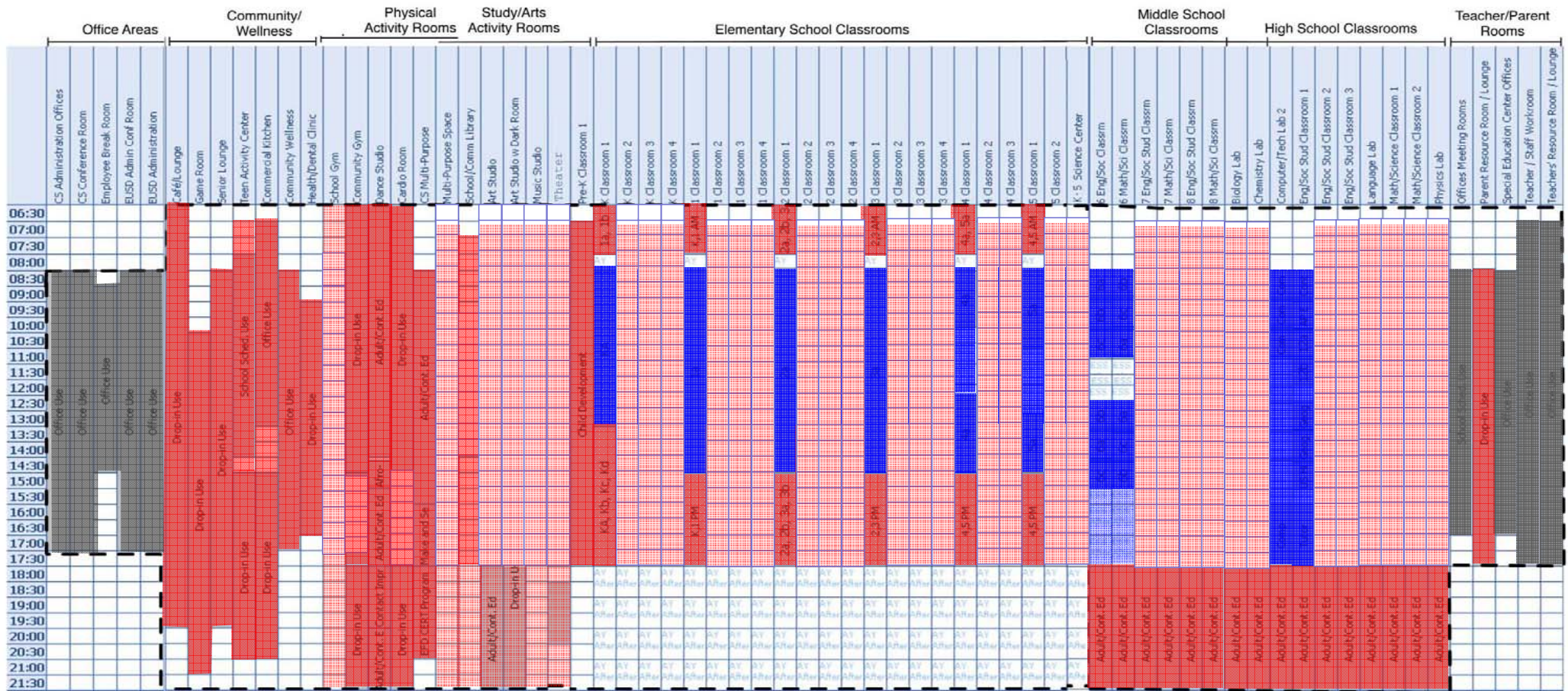


Full Program Usage: Weekdays, School in Session



Office
School
Community
Shared

Full Program Usage: Weekdays, School Not in Session



Office
School
Community
Shared